



VANTAGE VIEW  
- A Tropical Experience -

**Where Nature Meets Luxury**

# Your Trusted Land Partner

With over 20 years of experience, Greens Property Developers is a name known for transparency, commitment, and quality. Our mission is to offer affordable and approved housing plots in nature-rich locations with seamless connectivity and modern infrastructure.

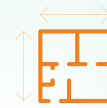
## We focus on:



Customer-first  
policies



Legally  
clear plots



Eco-friendly, value -  
added layouts

## Why Choose Us

### *Peace of Mind, Guaranteed*

We provide complete documentation for:

Approved Layout Plans | Patta, Chitta & EC |

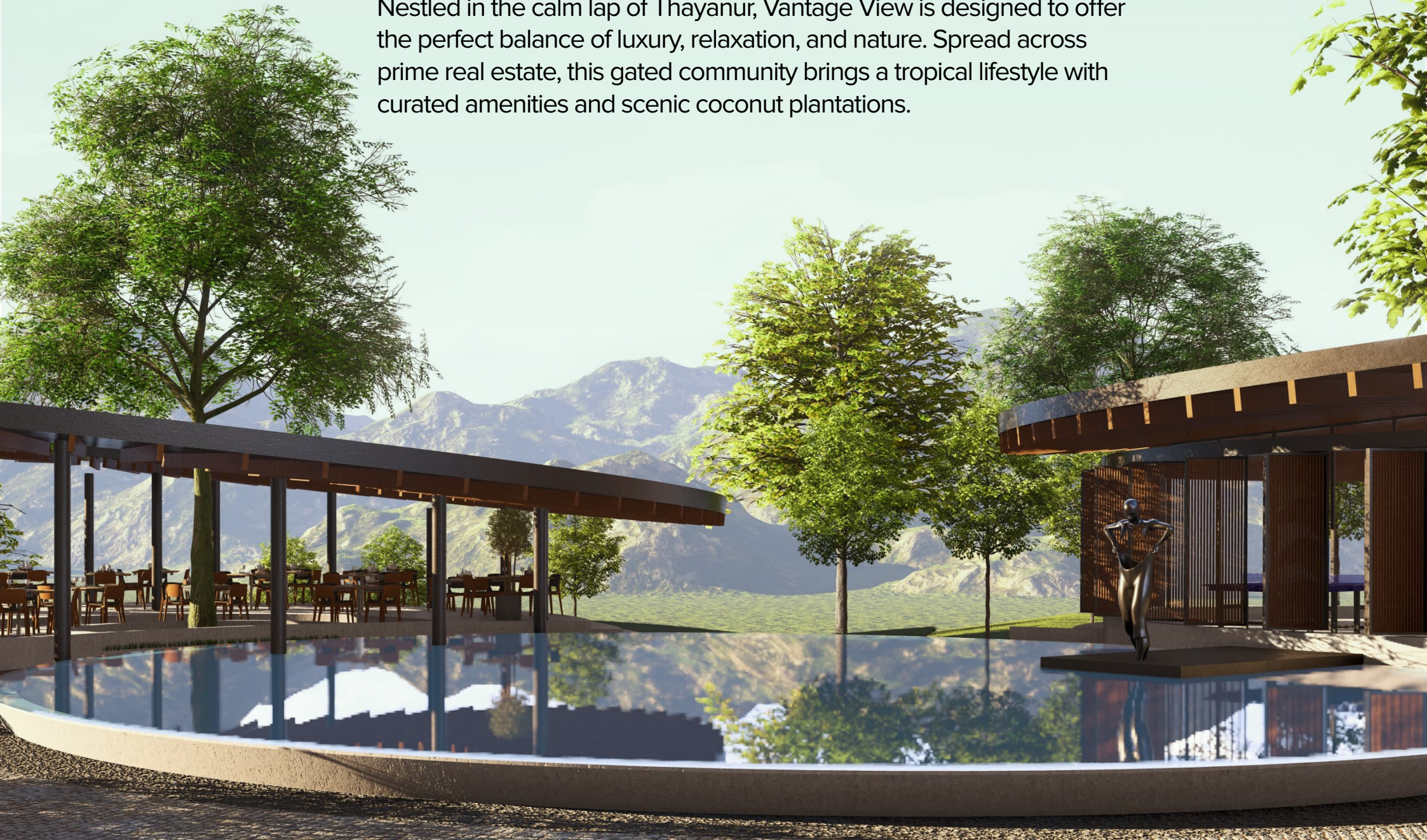
Parent Documents | Loan Assistance & Registration Support

100% Transparent  
Dealings.  
No Surprises.



# Vantage View – A Tropical Experience

Nestled in the calm lap of Thayanur, Vantage View is designed to offer the perfect balance of luxury, relaxation, and nature. Spread across prime real estate, this gated community brings a tropical lifestyle with curated amenities and scenic coconut plantations.



# Lifestyle Amenities at Vantage View

*Where Every Day Feels Like a Vacation*

Vantage View blends nature's serenity with world-class comforts, offering a resort-like lifestyle every day. From lush plantations and spa indulgence to elite dining, fitness, and leisure zones — every amenity is crafted to inspire elevated living. Step into a tropical haven where luxury meets harmony.

- ◆ V Club House
- ◆ Swimming Pool
- ◆ Sample Villa
- ◆ Balinese Spa
- ◆ Resto Bar
- ◆ Concrete Roads
- ◆ Coconut Plantation





# Crafted for Active & Enriched Living

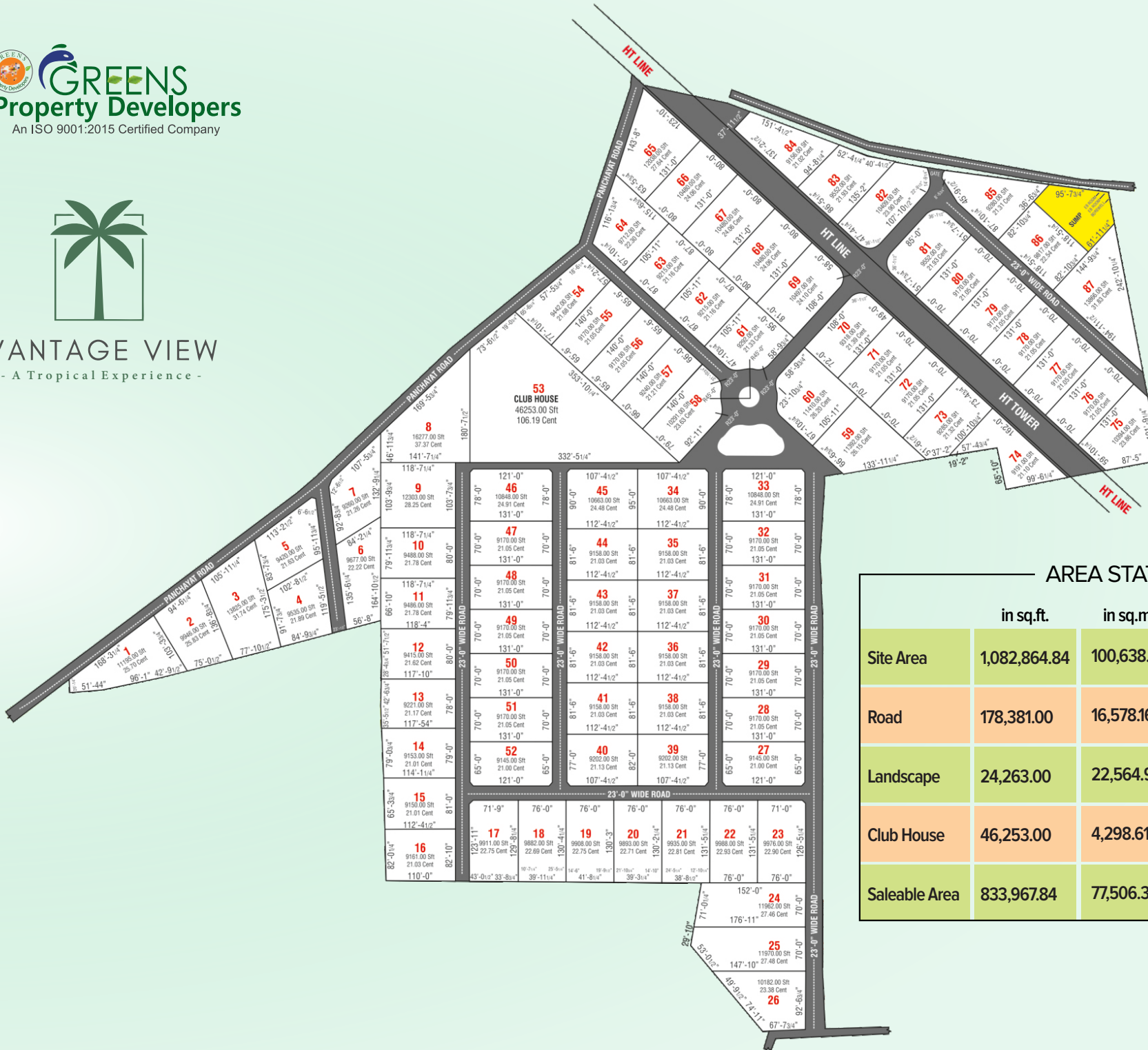
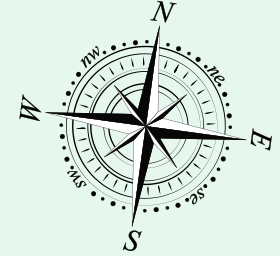
*Designed for Joy, Wellness, and Community.*

At Vantage View, our commitment to a holistic lifestyle extends beyond the present. The upcoming amenities are thoughtfully designed to enrich the community experience, promote well-being, and create engaging spaces for all age groups.

- ◆ Shuttle Court
- ◆ Pickle Ball Court
- ◆ Gymnasium
- ◆ Indoor Games for Kids



**VANTAGE VIEW**  
- A Tropical Experience -



**AREA STATEMENT**

	in sq.ft.	in sq.mt.	in cent	in acre
Site Area	1,082,864.84	100,638.00	2,486.49	24.86
Road	178,381.00	16,578.16	409.60	4.10
Landscape	24,263.00	22,564.93	55.71	0.56
Club House	46,253.00	4,298.61	106.21	1.06
Saleable Area	833,967.84	77,506.30	1,914.97	19.15



# Your Plot, Your Paradise!

NOW IS THE BEST TIME TO OWN A PLOT AT VANTAGE VIEW  
WHERE INVESTMENT MEETS INDULGENCE.

**☎ 9962 038 038**

